



Sonostar Technologies Co., Limited

Add: C Building, #27 Yayingshi Road, Science Town, Guangzhou, China
Tel: +86-20-32382095 Fax: +86-20-62614030 Skype: sonostar-ut
Web: www.sonostarmed.com E-mail: sonostar@sonostar.net



New Tech, New Life

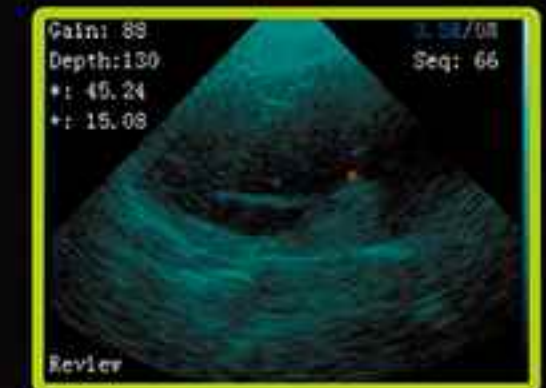
wireless transmission!



UProbe-1

Wireless Probe type Ultrasound

- Workable with Tablet or Smart Phone
- Built-in and replaceable battery
- Advanced digital imaging technology, clear image
- High cost-effective
- Wireless connectivity, easy to operate
- Small and light, easy to carry
- Applicable in emergency, clinic, outdoor and vet inspection
- Intelligent terminal platform, powerful expansion functions on application, storage, communication, printing



UProbe-1 is a wireless mechanical probe scanner. This wireless probe scanner with integrated ultrasound circuit boards inside, can wireless connect to the PC Tablet, SmartPhone that after installed ultrasound software, then realize the functions of a ultrasound scanner.

It is so small and smart, convenient for carry and operation.

Application Range:

In emergency clinical, hospital ward inspection, community clinical and outdoor inspect, an easy carried & operated compact ultrasound such as UProbe-1 wireless probe is desired.

In addition, the wireless probe can be conveniently used in surgery without fixing of cables. And by using the disposable protecting cover, it can easily solve the sterilization issue of the probe.

Also for powerful communication capability of the smart terminals, the wireless probe can meet the needs of the telemedicine.

Specifications:

- Scanning system: Mechanical Sector sweep
- Frequency: Mechanical sector probe 3.5MHZ
- Depth: 100-180mm, Adjustable
- Screen: Smart phone or tablet screen
- Supporting system: Apple MacOSx (Android, Windows system coming soon)
- Display mode: B mode
- Image gray scale: 256 level
- Image Storage: Using intelligent terminal customers to use (mobile phones,Tablet PC) storage devices
- Suitable for Obstetrics, Abdominal organs ultrasound scanning
- Power: by built-in battery
- Power consumption: 10W (unfreeze) /4W (freeze)
- Battery working time: 3 hours
- Size:104mm*50mm*22mm
- Weight: 308 gram

Standard Configuration:

- Main Host(probe) 1 Unit
- Internal Battery and charger 1 Set

Options:

Tablet, Phone



Work on iPhone